

PROVIDE CENTRALIZED CONFIGURATION AND POLICY MANAGEMENT

Blue Coat Director

Blue Coat Director is an essential management component of the Blue Coat Security and Policy Enforcement Center. Director provides centralized policy, configuration and device management of Blue Coat ProxySG appliances across any distributed enterprise. From a single, easy-to-use web interface, administrators can deploy hundreds of appliances, monitor and enforce security and acceleration policies.

Centralized, network-wide policy-based management

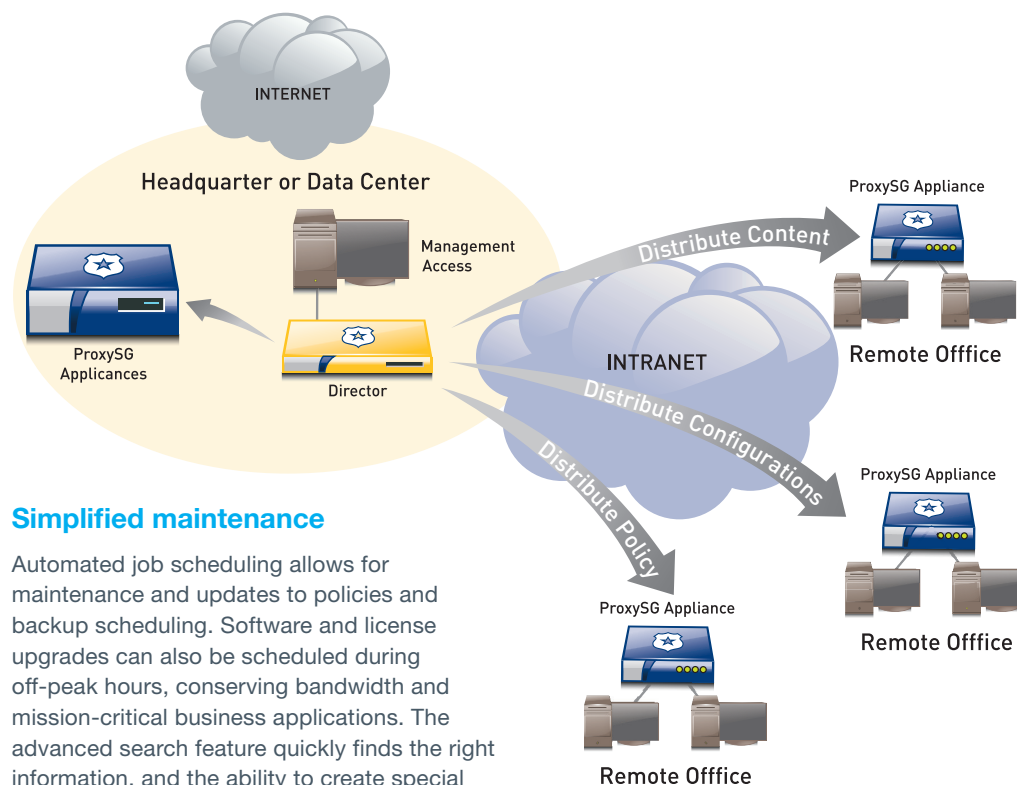
With Blue Coat Director, IT administrators can develop ProxySG policy locally and distribute globally, creating a flexible policy hierarchy that includes a global master policy, local/regional policies and even customized policies to ensure compliance. Rich features including remote access to the management console, available HA configuration and automated backup and archiving ease management of large and/or globally distributed ProxySG deployments.

Quick start-up

The web start application dynamically retrieves the Java library for a seamless login. Automatic grouping by OS and model types saves time and effort and simplifies ongoing maintenance.

5 minute provisioning

Rapidly configure and deploy new devices using flexible configuration templates to ensure policy consistency and appliance availability.



Simplified maintenance

Automated job scheduling allows for maintenance and updates to policies and backup scheduling. Software and license upgrades can also be scheduled during off-peak hours, conserving bandwidth and mission-critical business applications. The advanced search feature quickly finds the right information, and the ability to create special groups allows for customized policy where needed.

AdminAuditor

Logs changes to policy across appliances and prevents on-box access ensuring compliance and policy enforcement. AdminAuditor makes it easier to achieve policy consistency across ProxySG deployments as well as policy rollback.

Powerful reporting and monitoring tools

Get detailed reports on job status, key health statistics and performance per region. Real-time monitoring and alert filtering by severity, metric, state, status and time helps IT administrators make knowledgeable decisions quicker. Reports can be scheduled during off-peak hours and sent as PDF attachments in email.

Enhanced visual policy manager

Using the table-driven visual policy manager interface or the traditional CLI enhances flexibility, allowing administrators to easily replicate and export policies to devices, as both interfaces offer full policy controls. Additionally, administrators can securely manage remotely using a Web browser.

Content management

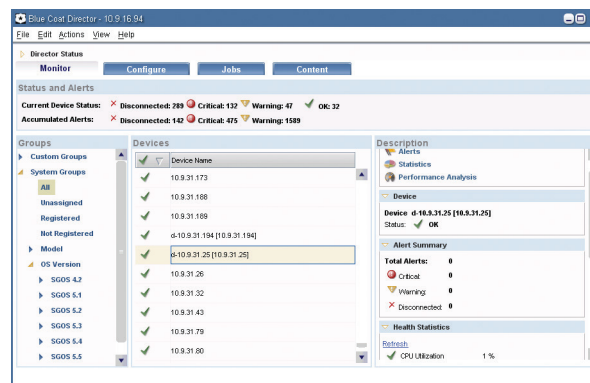
Content Delivery Network Architecture provides the ability to distribute content across the enterprise network using the Job Scheduler, eliminating the need to backhaul traffic and conserving valuable network resources. Content can be distributed, prioritized and scheduled according to business needs. An optional XML API is provided for quick access to content distribution controls.

Delegated Administration

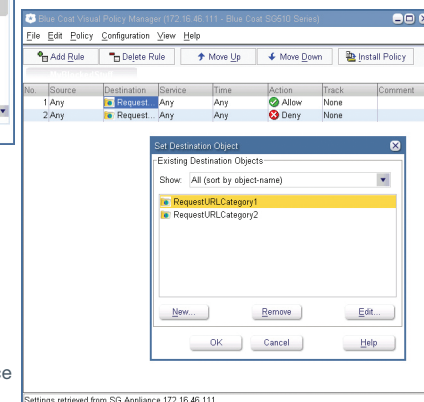
Provides delegated administration capabilities to URL and category based block and allow lists. Workgroup or Departmental administrators can now manage web policy for their own groups.

Key Benefits

- Provision new ProxySG appliances in minutes
- Centralize policy management and auditing for compliance
- Easily manage licenses and upgrades
- Real-time visibility into health and performance
- Save valuable network resources by managing content
- Manage remotely using a web browser
- IPv6 support



Director dashboard with updated user interface.



Visual Policy Manager interface offers full policy controls.

Available as a Hardware Appliance (specifications below) or Virtual Appliance

DIRECTOR 510

Number of Appliances Managed Up to 300

System 1x320GB SATA disk drive*, 1GB RAM, (2) integrated (on board) 10/100/1000 Base-T NICs

OPERATING ENVIRONMENT

Power AC power 100-240V, 50-60Hz, 6.3-3.0A

Maximum Power 150 Watts

Thermal Rating 510 BTU/Hr

Temperature 5°C to 35°C (41°F to 95°F)

Humidity Less than 90% relative humidity, non-condensing

Altitude Up to 3048m (10,000ft)

DIMENSIONS AND WEIGHT

Enclosure 19" Rack-mountable

Dimensions (L x W x H) 58 cm x 44 cm x 4.4 cm (22.8 in x 17.4 in x 1.7 in)

Weight (maximum) 12.3 kg (27 lb)

REGULATIONS

Safety IEC60950 (CB Scheme), UL60950 (USA), CSA C22.2 No.60950 (Canada), EN60950 (CE/Europe), CNS14336 (Taiwan), GB4943 (China), MEK60950 (Russia), NOM-019 (Mexico), AS/NZS 60950-1 (Australia/New Zealand)

Electromagnetic Compliance (EMC) CISPR22/CISPR24 (International), EN55022/EN55024 (CE/Europe), FCC part 15 (USA), ICES-003 (Canada), VCCI V-3 (Japan), AS/ZNS-CISPR22 (Australia/New Zealand), CNS13438 (BSMI), 51318.22/51318.24 (Russia), GB9254/GB17625 (China), EM:KN22/IM:KN24 (Korea). Tested to Class A Emissions for all standards.

Environmental RoHS-Directive 2011/65/EU, REACH-Regulation No 1907/2006

More Info Contact regulatoryinfo@bluecoat.com for specific certifications or additional support

Client System Requirements Java Runtime Environment, Windows 2000 or XP Support

Support Limited, non-transferable hardware warranty for a period of one (1) year from date of shipment. BlueTouch Support contracts available for 24/7 software support and options for hardware support.

* For units shipped after 7/7/2010