

FAST, SCALABLE, TURNKEY APPLIANCES FOR SECURITY ANALYTICS

Blue Coat Security Analytics Appliances

Today's advanced threats keep getting smarter and more sophisticated. So should your defenses and ability to respond. That means you need full visibility into your network traffic and better security intelligence. You need a solution that blends high performance, scalability, and security analytics throughout the operational domain. Blue Coat Security Analytics Appliances, an integral part of the Blue Coat Advanced Threat Protection Lifecycle Defense, are turnkey, pre-integrated, pre-configured modules that deliver complete network visibility and situational awareness right out of the box – so you can react to security issues in real time, protect your workforce, and constantly improve your security processes.

Integrated, Turnkey Solution

Blue Coat Security Analytics Appliances are pre-configured modules that harness Blue Coat Security Analytics Software to capture, index, and classify all network traffic (including full packets) in real time. Data is stored in an optimized file system for rapid analysis, instant retrieval, and complete reconstruction.

The appliances can be deployed anywhere in the network: at the perimeter or the core, 10 GbE backbones, or remote links to deliver clear, actionable intelligence for real-time situational awareness, continuous monitoring, advanced malware detection, incident response and resolution, data loss monitoring and analysis, organization policy compliance, and security assurance.

Advanced Capabilities for Advanced Protection

Security Analytics Appliances are the only completely integrated solution for security analytics and advanced threat protection, providing:

Application Classification: More than 2,000 applications and thousands of descriptive, metadata attributes, including content types,

file names, and more are classified for easy analysis and recall.

Real-time Threat Intelligence: Blue Coat ThreatBLADES integrate directly with the Security Analytics Appliances and leverage the Blue Coat Global Intelligence Network to deliver instant, actionable intelligence on threats and advanced malware delivered via web, email, or file protocols.

Layer 2 to 7 Analytics: The Security Analytics Platform provides a variety of analytics tools such as complete session reconstruction, data visualization, Root Cause Explorer, timeline analysis, file and object reconstruction, IP geolocation, and trend analysis.

Context-aware Security: The appliances integrate with best-of-breed security technologies to pivot directly from any alert or log and obtain full-payload detail and evidence of the full source and scope of the event – before, during and after the breach.

Root Cause Explorer: This effective incident responder tool uses extracted network objects to reconstruct a timeline of suspect web sessions, emails, and chat conversations.

AT A GLANCE

Description

Security Analytics Appliances are preconfigured modules that deliver network security visibility, situational awareness and post-breach incident response.

Solution Options

- 2Gbps appliances: High-performance analytics; massive scalability; centralized management
- 10Gbps appliances: Enterprise-proven capabilities via more interfaces, storage, and memory

Capabilities

- Real-time threat intelligence, security analytics, and complete security visibility from the data center to remote offices
- High performance and optimized storage to meet growing network traffic demands
- Integration with existing security infrastructure to leverage investments and established processes and workflows

Key Benefits

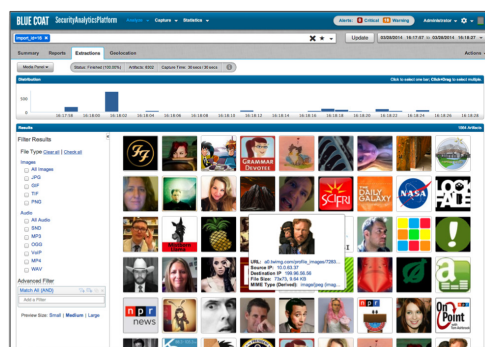
- Gain situational awareness and understand the full context of security events
- See every detail of an event with Layer 2-7 traffic capture and deep packet inspection
- Speed threat identification, reduce incident response time, and shorten exposure windows
- Optimize performance of next-generation malware analysis and sandboxing
- Quickly achieve results with easy-to-deploy, integrated turnkey appliances

Benefits

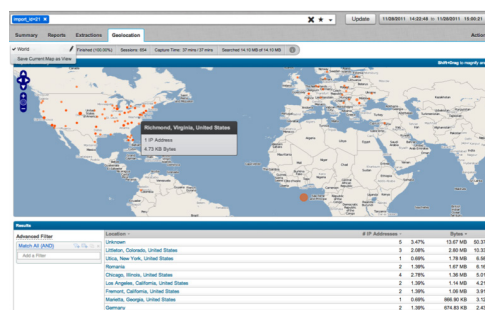
- Total visibility into network traffic through Security Analytics Software, which records and classifies every packet of network traffic
- Situational awareness with clear, concise, actionable intelligence about security threats to applications, files, and web content
- High performance with 2-10 Gbps interfaces for lossless capture on certified, industry-standard hardware platforms
- Massive scalability with support for 6-20 TB on each appliance and add-on capacity to meet fast-changing requirements
- Centralized management so you can monitor thousands of network segments from a single pane of glass
- Direct access to the latest threat intelligence via tight integration to Blue Coat ThreatBLADES and the Global Intelligence Network
- Scalability to expand as your coverage and storage needs grow with standalone or distributed deployment options
- Confidence in your security defenses through deployment of durable, certified, and thoroughly tested appliances
- Fast results through easy-to-deploy, integrated turnkey appliances
- Integration with leading security vendors such to deliver full context to any security alert – what happened, before, during and after

Features

- Scalable, easy, and distributed management with Security Analytics Central Manager
- Fully integrated with the all-new Blue Coat ThreatBLADES
- Stand-alone operation with built-in Security Analytics Dashboard
- High-performing, integrated appliances for lossless packet capture, indexing and classification
- Large storage capacity to accommodate extended historical capture windows
- Turnkey deployment with preinstalled and pre-configured Security Analytics Software
- Carrier-class appliances: high availability and serviceability



Media Panel: View all images files and all associated metadata





Security
Empowers
Business

Blue Coat Systems Inc.
www.bluecoat.com

Corporate Headquarters
Sunnyvale, CA
+1.408.220.2200

EMEA Headquarters
Hampshire, UK
+44.1252.554600

APAC Headquarters
Singapore
+65.6826.7000

SECURITY ANALYTICS APPLIANCES

	2G APPLIANCE	10G APPLIANCE	CENTRAL MANAGER	STORAGE MODULE
INTERFACES	3 x 10/100/1000 BaseT	7 x 10/100/1000 BaseT 2 x 10 GbE	4 x 10/100/1000 BaseT	2 SAS6
ON-BOARD STORAGE	6TB Usable (Capture + Index): - 5TB RAID-5 Capture (6 x 1TB) - 1TB RAID-1 Indexing (2 x 1TB) - 1TB RAID-1 System (2 x 1TB)	22TB Usable (Capture + Index): - 18TB RAID-5 Capture (19 x 1TB) - 4TB RAID-5 Indexing (5 x 1TB) - 1TB RAID-1 System (2 x 1TB)	3TB Usable: - 1TB RAID-1 System (4 x 1TB)	22TB Option (22TB Usable / 24TB Raw) 44TB Option (44TB Usable / 48TB Raw)
MAX. USABLE STORAGE	Up to 3 20TB Storage Modules - 72TB usable storage Up to 1 40TB Storage Module - 50TB usable storage	Up to 6 22TB Storage Modules - 145TB usable storage Up to 6 44TB Storage Modules - 264TB usable storage	---	22TB Option: 12 x 2TB 7.2K RPM Near-Line SAS 6 Gbps, 3.5" 44TB Option: 12 x 4TB 7.2K RPM Near-Line SAS 6 Gbps, 3.5"
CPU	Dual 2.5 GHz, 6 Cores	Dual 2.7 GHz, 16 Cores	Dual 2.5 GHz, 6 Cores	
MEMORY CAPACITY	8 x 8GB 1600 MHz RDIMMs, 1600 MT/s, Standard Volt, Dual Rank, x4 Data Width	16 x 8GB 1600 MHz RDIMMs, 1600 MT/s, Standard Volt, Dual Rank, x4 Data Width	8 x 8GB 1600 MHz RDIMMs, 1600 MT/s, Standard Volt, Dual Rank, x4 Data Width	
RACK HEIGHT	1 RU	2 RU	1 RU	2 RU
RACK DEPTH	710 mm / 28 inches	723 mm / 28.5 inches	710 mm / 28 inches	710 mm / 28 inches
CHASSIS CONFIGURATION	Up to 10 Hard Drives	Up to 26 2.5" Hard Drives	Up to 4 Hard Drives	
POWER SUPPLIES	Dual, Hot-Plug, Redundant (1+1), 750W	Dual, Hot-Plug, Redundant (1+1), 1100W	Dual, Hot-Plug, Redundant (1+1), 750W	Dual, Hot-plug, Redundant, 600W
POWER CORDS	2 x NEMA 5-15P to C13 Wall Plug, 125V 15A	2 x NEMA 5-15P to C13 Wall Plug, 125V 15A	2 x NEMA 5-15P to C13 Wall Plug, 125V 15A	2x C13 to C14, PDU-style, 12 amp, 2ft, Redundant PDUs
RAILS	ReadyRails™ Sliding Rails with Cable Management Arm	ReadyRails™ Sliding Rails with Cable Management Arm	ReadyRails™ Sliding Rails with Cable Management Arm	RackRails, RapidRails for Dell Rack
SERVER RAID CONTROLLER	PERC H710 Integrated RAID Controller	PERC H710 Integrated RAID Controller	PERC H710 Integrated RAID Controller	PERC H700
EXTERNAL RAID CONTROLLER	PERC H810 RAID Adapter for External JBOD	2 x PERC H810 RAID Adapter for External JBOD	---	---
EMBEDDED MANAGEMENT	IDRAC7 Express with Vflash, 8GB SD Card	IDRAC7 Express with Vflash, 16GB SD Card	IDRAC7 Express with Vflash, 8GB SD Card	---
INPUT POWER	355 W (1211.3 Btu/h)	645 W (2200.8 Btu/h)	297 W (1013.4 Btu/h)	294.1 W (1003.5 Btu/h)
INPUT CURRENT	3.2 amps	5.9 amps	2.7 amps	2.7 amps
AIR FLOW	19.2 CFM (9 l/s)	39.6 CFM (18.7 l/s)	21.5 CFM (10.2 l/s)	29.1 CFM (13.7 l/s)
TOTAL WEIGHT	43.6 lbs (19.8 kg)	64.4 lbs (29.2 kg)	43.6 lbs (19.8 kg)	62.6 lbs (28.4 kg)
MAX. POTENTIAL POWER	547.8 W (1869.1 Btu/h)	921.5 W (3144.2 Btu/h)	481.6 W (1643.2 Btu/h)	

© 2015 Blue Coat Systems, Inc. All rights reserved. Blue Coat, the Blue Coat logos, ProxySG, PacketShaper, CacheFlow, IntelligenceCenter, CacheEOS, CachePulse, Crossbeam, K9, the K9 logo, DRTR, Mach5, Packetwise, Policycenter, ProxyAV, ProxyClient, SGOS, WebPulse, Solera Networks, the Solera Networks logos, DeepSee, "See Everything. Know Everything.", "Security Empowers Business", and BlueTouch are registered trademarks or trademarks of Blue Coat Systems, Inc. or its affiliates in the U.S. and certain other countries. This list may not be complete, and the absence of a trademark from this list does not mean it is not a trademark of Blue Coat or that Blue Coat has stopped using the trademark. All other trademarks mentioned in this document owned by third parties are the property of their respective owners. This document is for informational purposes only. Blue Coat makes no warranties, express, implied, or statutory, as to the information in this document. Blue Coat products, technical services, and any other technical data referenced in this document are subject to U.S. export control and sanctions laws, regulations and requirements, and may be subject to export or import regulations in other countries. You agree to comply strictly with these laws, regulations and requirements, and acknowledge that you have the responsibility to obtain any licenses, permits or other approvals that may be required in order to export, re-export, transfer in country or import after delivery to you. v.DS-SECURITY-ANALYTICS-APPLIANCE-EN-v4b-0115