

# Blue Coat Reporter

Key to any network operation is powerful and easy-to-use reporting tools that quickly import and display information about employee Web activities to HR managers, business managers, and network administrators. To preserve network and user productivity, monitor spyware and web content, and maintain a compliant Web environment, companies need:

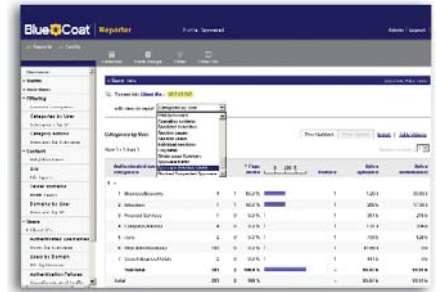
- Quick and comprehensive visibility to websites and Web content users are browsing
- Awareness of spyware and threats masked in Web content
- The ability to quickly drill-down from general trends to specific user data
- Positive identification of users and their related actions
- The ability to easily schedule and distribute reports for multiple departments

Blue Coat Reporter analyzes comprehensive log files from Blue Coat SG in over 150 pre-defined reports, including spyware, IM, P2P, and popular sites. Beyond URL filtering, Reporter provides visibility to Web content, performance, threats, and trending over defined time periods.

With comprehensive, policy-enabled logging, Blue Coat Reporter with Blue Coat SG provides the unfair advantage of capturing data regarding all user web activities. Reporter quickly processes robust log data, providing easy to view reports for department managers, HR managers, security specialists, and network administrators. Blue Coat provides the ultimate architecture for complete web visibility and control.

***“Numerous “Web channel” capabilities have turned corporate networks into virtual playgrounds, where unmonitored users are pushing the limits of acceptable use of company resources.”***

*META Group “The Growing Security Threat: Your Employees” White Paper*



## Comprehensive Security and Web Traffic Reports

### Interactive Reports Dashboard

Intuitive, “drill-able” overview of user activity is automatically updated as new logs become available

### Real-Time Reporting

Continuous log uploads from one or more Blue Coat SG appliances provide up-to-the-minute views of users’ activities

### Instant Reports

Over 150 pre-defined reports for tracking all user web activities with analysis for:

- Traffic Profiles
- Spyware
- Security/Web AV
- Filtering Categories (URLs)
- Web Content
- Users/Authentication
- Technical Profiles
- Sessions

### Scalable Performance

Performance-optimized design ensures rapid processing of even the largest logs, while minimizing the amount of server disk space required.

### Content Filtering and Trend Analysis

Track users’ Web usage patterns. Summary reports include access attempts, blocked sites, access by category and much more.

### Zoom Filters

Dynamic drill-downs into comprehensive Blue Coat SG log files. Spreadsheet style table allows virtually unlimited query flexibility.

### And More...

See Blue Coat TechBriefs for additional reporting and URL filtering solutions:

[www.bluecoat.com/resources](http://www.bluecoat.com/resources)

Reporter creates flexible administrative, security and network reports for the entire enterprise. With centralized log aggregation, Blue Coat Reporter scales to the volume of information required by even the largest organizations. With role-based administration via an easy-to-use browser interface, reports can be easily distributed to multiple administrators and across departments.

**Page views per user Report**  
 Statistics for 20 Dec 2004 - 21 Dec 2004, 2 days

User	Percentage
bob.kent	53.7 %
john	24.4 %
alice	10.9 %
jim	10.5 %
-	0.5 %

101.9 %  
81.5 %  
61.1 %  
40.8 %  
20.4 %  
0.0 %

1 ALLOWED 2 DENIED 3 SPYWARE/Application

Create unique reports for individual users, departments and regions.

The Reporter Dashboard provides an intuitive, interactive overview of user activity.

**Profile Dashboard**  
 Logged in as 'admin' | Admin | Reports | Config | Help | Loge

**Log Reader Activity**

Files	2
Log lines	15,742
Bytes	8.6 MB
Average performance	715 lines/sec
Pre-filtered	282

**Top Users by Page Views**

All dates (12/20/04 01:00:00)	
bob.kent	2,516
john	1,148
alice	528
jim	432
-	24

**Top Domains by Page Views**

All dates (12/20/04 01:00:00)	
i.i.com.com	306
images.bestbuy.com	230
i.a.cnn.net	216
l.incredifind.com	140
www.bose.com	138
www.3com.com	132
images.fedex.com	128
images.apple.com	120
pics.ebaystatic.com	120
images.micron.com	120

**Top Categories by Page Views**

- Web Advertisements
- Computers/Internet
- Business/Economy
- News/Media
- Shopping
- Software Downloads
- Search Engines/Portals
- none
- Arts/Entertainment
- Web Communications
- Other

**Top Filter Result by Page Views**

All dates (12/20/04 01:00:00)	
ALLOWED	4,414
SPYWARE/Application	122
DENIED	112

Menu-driven report selection. Click and choose multiple report categories and drill down to specific reports ready to view and analyze.

**Date Range - Microsoft Internet Explorer**

From 26/Jul/2004 To 27/Dec/2004

Calendar view showing days from July 26 to December 27, 2004.

View specific days from a multi-day log file by clicking on the calendar or click on a Date Range to view a group of days.

**Filter - Microsoft Internet Explorer**

Filter On: [Hide Empty Filter Fields](#)

- Authenticated username is is NOT [Add New Filter Item](#)
- Client IP is is NOT [Add New Filter Item](#)
- Content category is is NOT [Add New Filter Item](#)
- Content filtering result is is NOT [Add New Filter Item](#)

Filtering options scope and narrow your reporting focus.

Drill down on specific user behavior to identify network abuses including attempts to access prohibited Web sites and time spent at permitted sites. Track inbound and outbound spyware communications and notify network personnel through email alerts. Comprehensive help screens teach an administrator to automate the reporting process.

Includes a broad set of Web anti-virus and security reports.

**ICAP virus user Detail Report**

Statistics for 20 Dec 2004 - 21 Dec 2004, 2 days

ICAP virus user Detail

ICAP virus IDs / Authenticated usernames	Bytes Transferred	Bytes downloaded	Bytes uploaded	Page views	Processing time
1 -					
1 bob kent	81.67 M	79.06 M	52.7 %	2.61 M	2,789
				2.50 M	1,425
				1.14 M	506
				498.62 k	566
				12.72 k	30
				<b>6.76 M</b>	<b>5,316</b>
				2.77 k	5
				1.33 k	3
				<b>4.10 k</b>	<b>8</b>
				1.33 k	3
				<b>1.33 k</b>	<b>3</b>

**Profile Dashboard**

Stream Reader Activity

Streaming Sessions	1
Log lines	77
Bytes	16.2 kB
Pre-filtered	0

Top Domains by Page Views

Domain	Page Views
10.2.16.210	157
espn-att.stanwave.com	26
us.i1.ymg.com	17
www.ibm.com	13
content.gateway.com	13
espn.go.com	7
a248.e.akamai.net	6
view.atdmt.com	5
www.gateway.com	5
www.google.com	5

Top Schemes by Page Views

View as: Pie Chart

Figured by: Page Views

Show top 10 results

Time Frame: All Dates

Save Settings

Top Filter Result by Page Views

View as: Pie Chart

Figured by: Page Views

Show top 10 results

Time Frame: All Dates

Save Settings

Top Viruses by Page Views

Viruses	Page Views
-	304

Analyze user and network activity in real-time using continuous log streams from one or more Blue Coat SG

**Urls**

Row 1 - 10 from 70

Url	Hits	Page views	Visitors	Bytes uploaded	Bytes downloaded
1 http://www.kazaa.com	240 15.4 %	6	1	56.18 k	768.58 k
2 http://www.aitnet.com	174 11.1 %	3	1	42.58 k	216.53 k
3 http://www.ebay.com	161 10.3 %	3	1		
4 http://www.startrekfanclub.org	139 8.9 %	3	1		
5 http://www.gator.com	114 7.3 %	6	1		
6 http://www.fastclick.com	114 7.3 %	2	1		
7 http://www.synopsys.com	93 6.0 %	3	1		
8 http://www.arcom.com	78 5.0 %	3	1		
9 http://www.dynasaver.com	70 4.5 %	3	1		
10 http://www.sigtronics.com	51 3.3 %	3	1		
<b>60 other items</b>	<b>328 21.0 %</b>	<b>153</b>	<b>-</b>		
<b>Total</b>	<b>1,562 100 %</b>	<b>188</b>	<b>-</b>		

E-mail, save, and schedule reports with a single mouse click.

Save and Close Cancel

Profile: Bob Kent

Action: Send report by email

Report: Daily Active (L)

Report date: Show entire available date range

Show last: 7 Day(s) including day of scheduler execution date

Recipient email address: HumanResources@Edge.com

Return email address: BobAdmin@Edge.com

Email subject: Bob Kent's web activity

SMTP server hostname:

Extra options:

Month: November Day: 12 Hour: 08 Minute: 00

Schedule: Every x Minutes

Use Above

Unique Spyware reports display overall spyware traffic analysis, infected clients that need cleansing, and blocked spyware.

## Administrator/HR View

Reporter provides information to meet the needs of different network administrators and HR departments. For example, an administrator will want to understand the impact of users on his network in terms of amounts of data downloaded.

HR departments want to know when and where users are going on the Internet. Filtering, Content and User reports are key to these personnel.

## Security View

Security administrators can evaluate risks and track user activity that is potentially dangerous, and quickly determine users with malicious content, including spyware. Plus, view a security analysis with sub-reports that include virus ids, virus IP detail, virus URL detail and virus user detail.

Security views provide administrators with greater visibility into the strength and stability of their network.

## Technical View

Network administrators can use Reporter to measure Web traffic performance, trends, errors, bandwidth impact, streaming traffic levels and more.

Technical reports include information for response codes, processing actions, operations, upload MIME types, Web browsers and operating systems.

Comprehensive and custom reports allow for analysis to track user and enterprise Web activity by user or geography.

### Blue Coat Reporter Specification Chart

	Standard Reporter	Enterprise Reporter
<b>System Requirements</b>	See Reporter sizing guide <a href="http://www.bluecoat.com/products/reporter/sizingGuide.html">http://www.bluecoat.com/products/reporter/sizingGuide.html</a>	See Reporter sizing guide <a href="http://www.bluecoat.com/products/reporter/sizingGuide.html">http://www.bluecoat.com/products/reporter/sizingGuide.html</a>
<b>Database</b>	Internal Database	Internal database
<b>Log Formats</b>	Blue Coat Instant Messenger Log Format, Blue Coat RealMedia Log Format, Blue Coat Squid Log Format, Blue Coat WC3 Log Format (ELFF), Blue Coat W3C Log Format (SG2 ELFF), Blue Coat Windows Media Log Format, Common Proxy Log Format	Blue Coat Custom Log Format, Blue Coat Instant Messenger Log Format, Blue Coat RealMedia Log Format, Blue Coat Squid Log Format, Blue Coat WC3 Log Format (ELFF), Blue Coat W3C Log Format (SG2 ELFF), Blue Coat Windows Media Log Format, Common Proxy Log Format
<b>Profile (report) Creation</b>	Limited to five (5)	Unlimited profile (report) creation
<b>Scalability</b>	Single processor only	Support for multiple processors
<b>Reports Available</b>	150+ pre-defined reports	150+ pre-defined reports
<b>Customizing Reports</b>	Limited	Create, customize, and edit a virtually unlimited number of reports

