

## ACHIEVE COMPLIANCE WITHOUT COMPLEXITY

Blue Coat Data Loss Prevention (DLP) enables you to detect and block potential data leaks quickly and accurately, all while achieving industry and regulatory compliance and risk mitigation objectives. Blue Coat DLP can help you maintain comprehensive security policies with minimal management overhead. You can also leverage powerful discovery capabilities to identify sensitive and unsecured information on your network before it gets into the wrong hands. With Blue Coat, you can quickly and easily deploy and maintain enterprise-class data loss prevention as a separate product or as part of the Blue Coat Application Delivery Network. As a result, you can achieve the right balance between your productivity, cost and security requirements.

## FEATURES

### Complete Network DLP

- > Effectively secure sensitive data that may inappropriately travel across the network through email, Webmail or social networking and other Web 2.0 communication channels. Blue Coat DLP allows you to easily create policies that analyze the data source, content, destination and more.

### Accurate Identification

- > Automated and accurate signature generation of structured and unstructured data allows you to easily implement security policies according to the type of information being transmitted. For instance, you may treat customer and corporate credit card data differently from an employee's personal credit card information with the ability to apply security policies according to user and data type. You can avoid false alarms and disrupted workflow, which can occur when a solution relies entirely on pattern matching and regular expressions to secure data. And Blue Coat DLP provides accurate data "fingerprinting" capabilities, in addition to powerful keyword, pattern, and regular expression support, so you can create precision policies to effectively secure your data while minimizing false positives.

### SSL Compliance

- > Deployed with ProxySG, Blue Coat DLP allows organizations to monitor and control SSL traffic through the gateway to mitigate the potential loss of sensitive information through secure Web transfers such as Webmail, a common tool of employee information theft.

### Full Inspection

- > In today's globally connected networks, information can easily be rearranged, combined, extracted or otherwise edited. To help reduce data manipulation resulting from intentional or accidental tampering, Blue Coat DLP is file format- and language-independent, double-byte

capable, and can inspect 600+ document types as well as archive and compress files.

### Comprehensive Discovery

- > Blue Coat DLP allows you to identify, catalog and secure data on servers and in databases across the network – all without installing and testing a local software agent. Our comprehensive discovery features allow you to "fingerprint" data, such as patient records, which resides in your databases. By fingerprinting your critical data, you can easily trace content that may be distributed in an unauthorized format, such as an email attachment or pasted into a PowerPoint presentation.

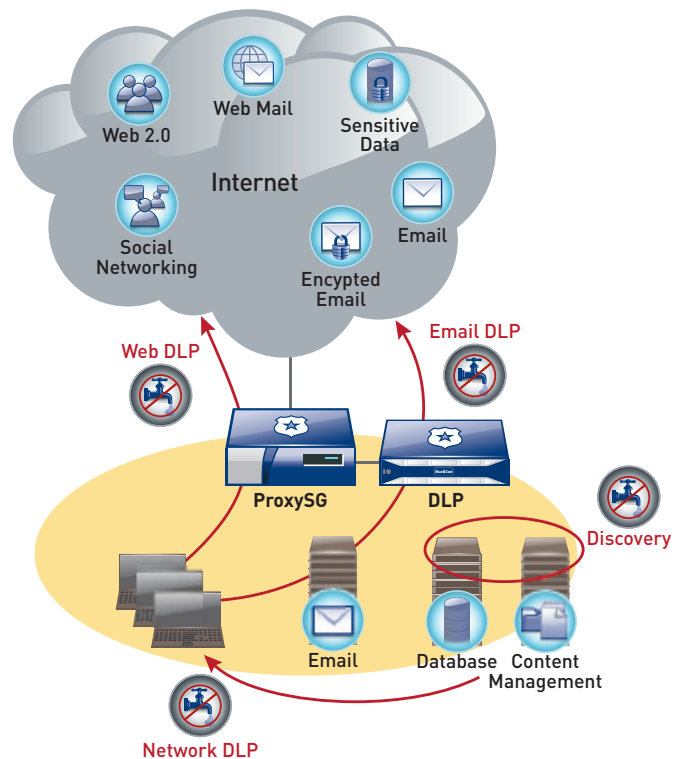
### Fast Installation

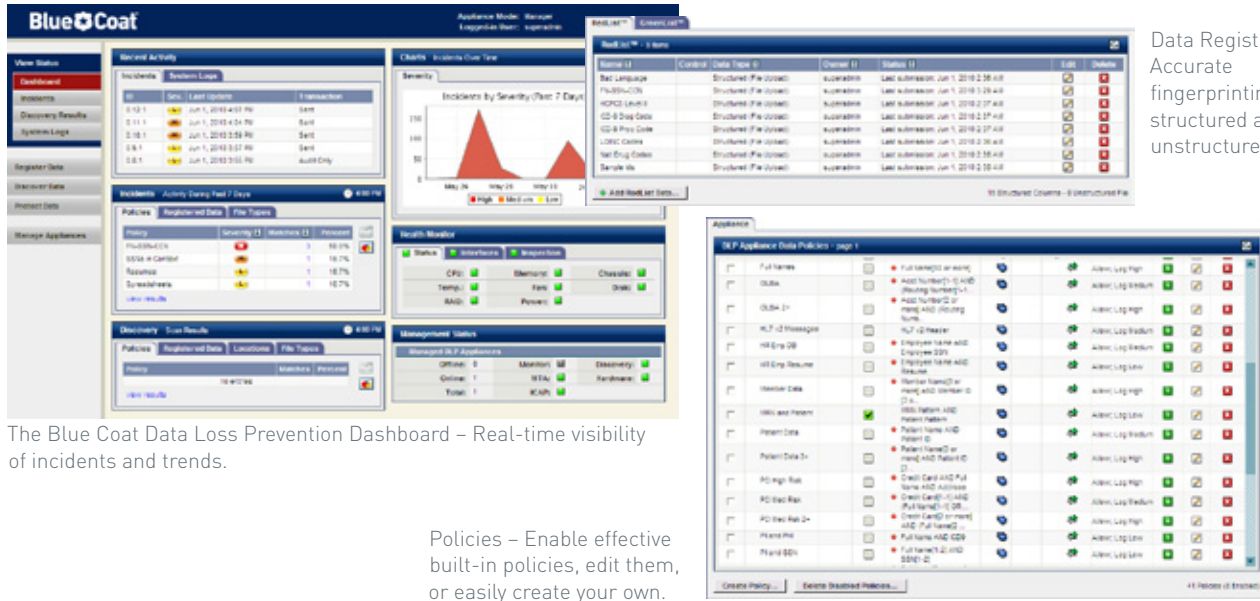
- > Industry and government regulatory requirements can be complex and

demanding, but Blue Coat DLP can quickly and easily move your organization closer to necessary compliance. A typical installation can take less than a day with a few key compliance and risk mitigation policies. You can then build, test and refine additional or existing policies with minimal time and effort.

### Flexible and Scalable

- > Each Blue Coat DLP appliance can serve one or multiple roles to help you reduce overall expense and achieve greater flexibility. A standalone appliance can meet the complex needs of a remote office while headquarters can deploy multiple appliances to deliver high availability, fault tolerance and scalability.





Data Registration – Accurate fingerprinting of structured and unstructured data.

The Blue Coat Data Loss Prevention Dashboard – Real-time visibility of incidents and trends.

Policies – Enable effective built-in policies, edit them, or easily create your own.

|   | DLP700  | DLP1700   | DLP2700   |
|---|---|---|---|
| <b>System</b>   |   |   |   |
| Processors  | 1xIntel® Xeon® E5620 Quad-Core,   | 2xIntel® Xeon® E5620 Quad-Core                        | 2xIntel® Xeon® X5670 6-Core                           |
| RAM   | 12GB Memory (6x2GB),  | 24GB Memory (6x4GB)                                   | 24GB Memory (6x4GB)                                   |
| Disk Drives   | 3x250GB SATA-RAID 5   | 6x500GB SATA-RAID 10                                  | 6x500GB SATA -RAID 10                                 |
| Network Interfaces  | 6 (4 integrated on board+ 2 with an add-on NIC) 10/100/1000 Base-T Ports  |   |   |
| <b>Operating Environment</b>  |   |   |   |
| Power   | AC Power 90-264V, 47-63Hz, 12.0-6.0A  |   |   |
| Maximum Power   | 600 Watt  | 700 Watt  | 700 Watt  |
| Thermal Rating  | 2049 BTU per hour   | 2390 BTU per hour                                     | 2390 BTU per hour                                     |
| Temperature   | 10° to 35°C at sea level. 10° to 28°C at 10,000 ft.   |   |   |
| Humidity  | 20% to 80% (non-condensing)   |   |   |
| Altitude  | Up to 3048m (10,000 ft)   |   |   |
| <b>Dimensions and Weight</b>  |   |   |   |
| Enclosure   | 19" Rack-mountable  |   |   |
| Dimensions – without bezel, power supply handles and rack latches (L x W x H) | 75.3cm x 42.4cm x 4.26cm<br>(29.64" x 16.69" x 1.68")   | 69.6cm x 44.31cm x 8.64cm<br>(27.4" x 17.44" x 3.40") | 69.6cm x 44.31cm x 8.64cm<br>(27.4" x 17.44" x 3.40") |
| Weight Maximum  | 39lbs   | 57.54lbs  | 57.54lbs  |
| <b>Regulations</b>  |   |   |   |
| Emissions   | FCC Part 15 Class A, EN 55022/ CISPR 22 Class A, EN 55024/ CISPR 24, EN 61000-3-2/IEC 61000-3-2, EN 61000-3-3/ IEC 61000-3-3, VCCI Class A, CE, C-Tick  |   |   |
| Safety  | IEC 60950-1, UL 60950-1, CAN/CSA C22.2, No. 60950-1, EN 60950-1, Nemko, GOST, TUV-GS  |   |   |
| Product Warranty  | Limited, non-transferable hardware warranty for one (1) year from date of shipment. Technical support for software and enhanced hardware support during the warranty period require additional valid Blue Coat service contracts. |   |   |